









LE SPLENDID-LILLE-2021/2022

This document should explain most of your audio/light questions for your coming in Lille – Le Splendid.

AUDIO SYSTEM SPECIFICATIONS

1. PA :

- 6 x L-Acoustics ARCS II (3 clusted per side)
- 2 x L-Acoustics SB28 (dual 18” subwoofer ; two center stage)
- 2 x L-Acoustics MTD 112 (in-fill passiv-coaxial ; 1 per side)

System Control/Processing:

LA Network manager, AES or Analog

Amplification :

2xLA 8 : ARC II + SUB SB28

1xLA 4X

2. FOH:

- 1 Desk YAMAHA PM5D RH

- 1 CD player

3. MONITOR (stage right)

- 1 Desk YAMAHA PM5D

- 1 patch 48

- 4 MTD112 L-acoustics passiv coaxial (4 amp chanel)

- 8 115FM L-acoustics active (8 amp chanel)

- 1 SB18 SUB L-Acoustics (drumfill),optional

4. MICS

- 2 B52

- 2 B91

- 10 SM57

- 10 SM58

- 10 E604

- 2 MD421

- 3 SE300

- 6 C451

- 14 DI BSS AR133

- 15 tall boom

- 12 short boom

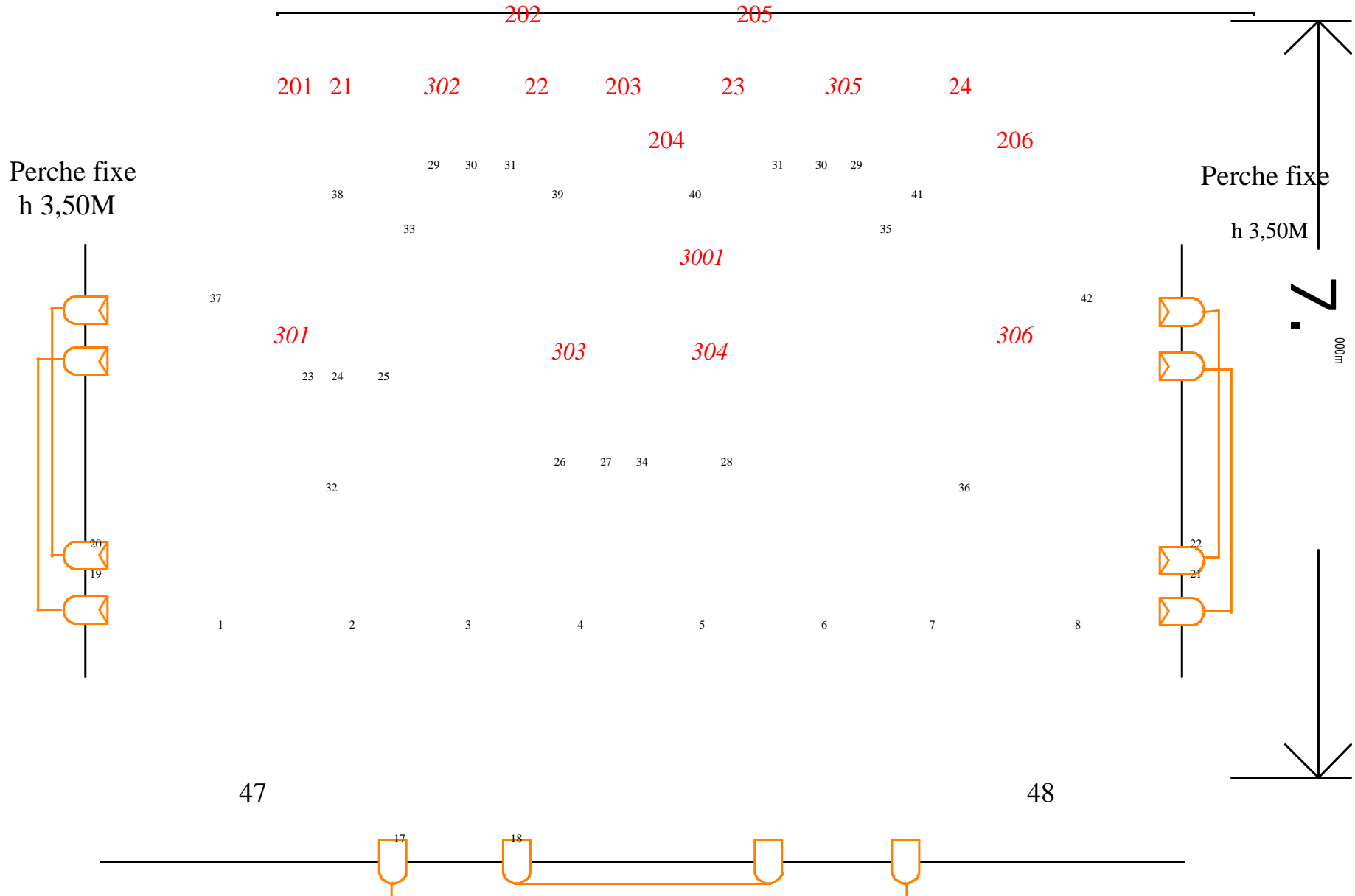
5. INTERCOM - Intercom between FOH, stage left, stage right

LE SPLENDIDE

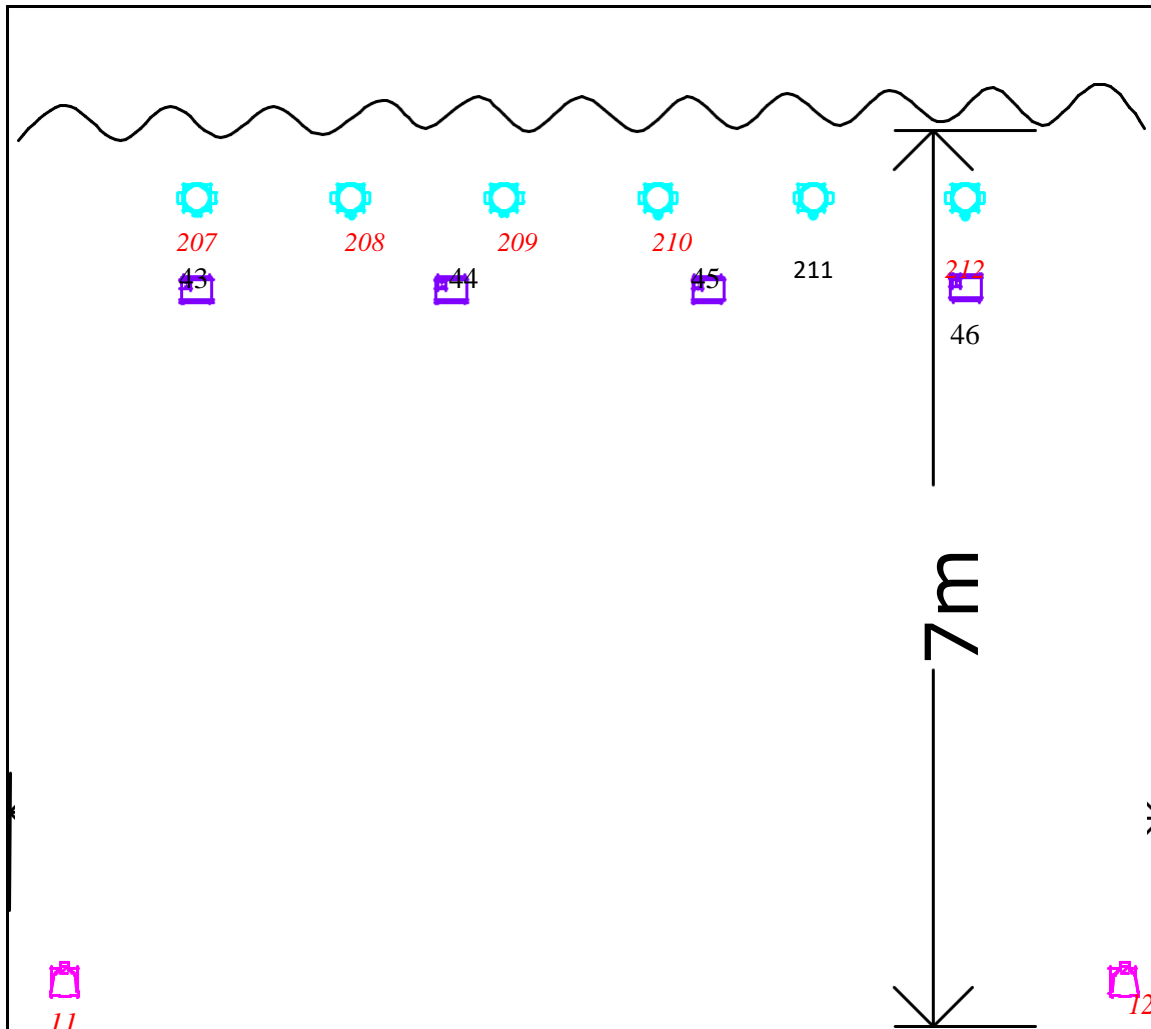


Lille

fond noir et pont backdrop



Perche salle à 7,50M du bord plateau



Symbol	Name	Count	Notes
	Par 64 MFL	4	
	Par 64 VNSP	12	
	Par 64 NSP	16	
	PC 1KW	8	
	Decoupe ADB 1 KW	5	
	FL 1300	4	
	Molefay	2	
	BRITEQ BTX-Saturn	6	25CH
	BRITEQ BT-ORBIT	12	14CH
	STARWAY stroblite 10K	1	4CH
	STARWAY PARKOLOR 120	2	10CH
	Sunstrip	4	10ch

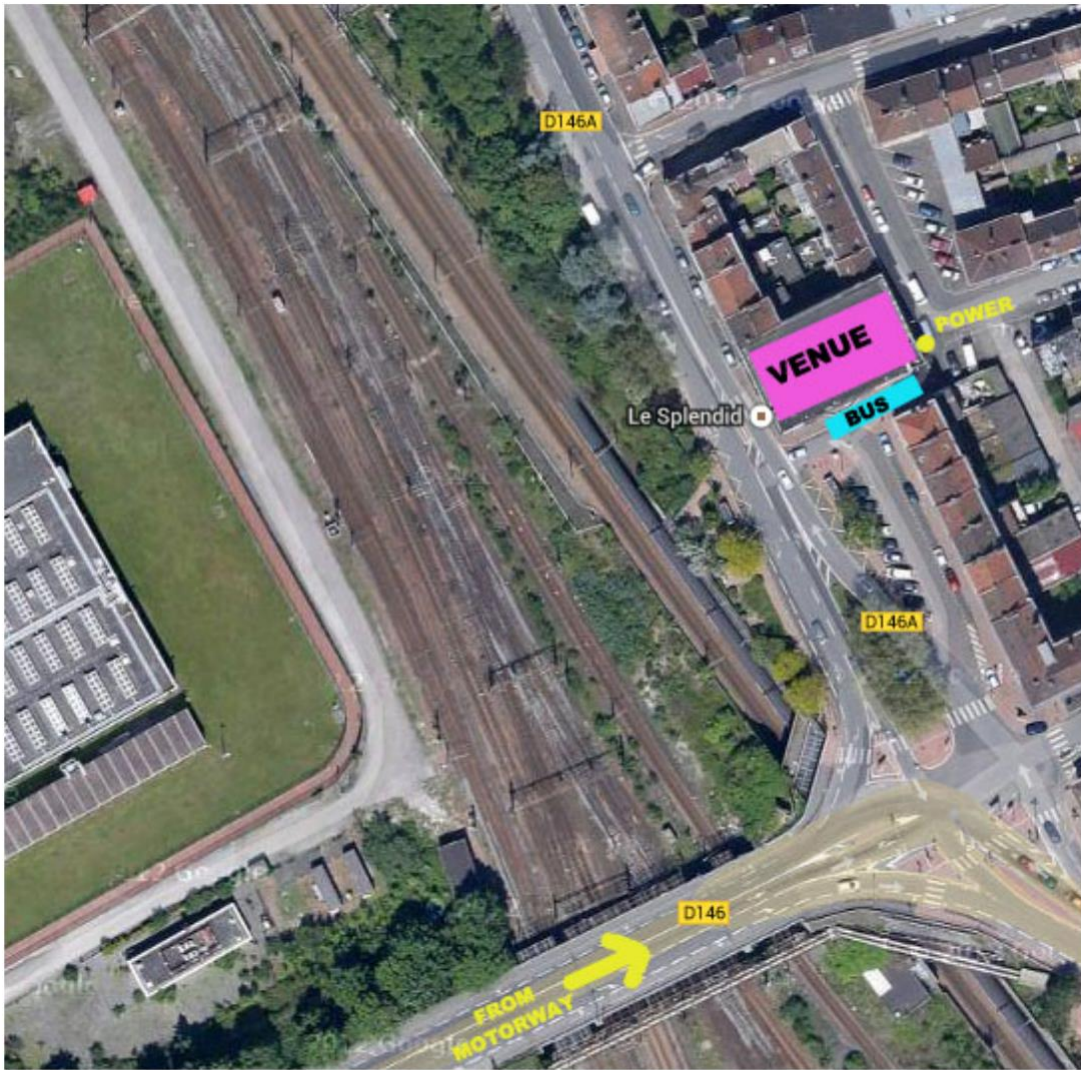
NOTES

- DF50 SMOKE
- Grand MA1 ultralight
- Jands ESP2
- 48 grada 2kW
- hauteur sous grille 6,50M
- 1 univers DMX auto
- 1 univers DMX trad
- 3 univers DMX Accueil
- 1 X 32A TRI Accueil

TYPE	Fixtures-N°	Patch	filters	notes
PC#1KW	1	2.1		
PC#1KW	2	2.2		
PC#1KW	3	2.3		
PC#1KW	4	2.4		
PC#1KW	5	2.5		
PC#1KW	6	2.6		
PC#1KW	7	2.7		
PC#1KW	8	2.8		
libre	9	2.9		CP62/MFL
libre	10	2.10		CP62/MFL
libre	11	2.11		CP62/MFL
libre	12	2.12		CP62/MFL
libre	13	2.13		CP62/MFL
libre	14	2.14		CP62/MFL
libre	15	2.15		CP62/MFL
libre	16	2.16		CP60/VNSP
PAR#64#F	17	2.17		CP60/VNSP
PAR#64#S	18	2.18		CP61/NSP
PAR#64#L	19	2.19		CP61/NSP
PAR#64#L	20	2.20		CP61/NSP
PAR#64#L	21	2.21		CP61/NSP
PAR#64#L	22	2.22		CP61/NSP
PAR#64#C	23	2.23		CP61/NSP
PAR#64#C	24	2.24		CP61/NSP
PAR#64#C	25	2.25		CP61/NSP
PAR#64#C	26	2.26		CP61/NSP
PAR#64#C	27	2.27		CP61/NSP
PAR#64#C	28	2.28		CP61/NSP
PAR#64#C	29	2.29		CP61/NSP
PAR#64#C	30	2.30		CP61/NSP
PAR#64#C	31	2.31		CP61/NSP
DECOUPE#1KW#ADB	32	2.32		
DECOUPE#1KW#ADB	33	2.33		
DECOUPE#1KW#ADB	34	2.34		
DECOUPE#1KW#ADB	35	2.35		
DECOUPE#1KW#ADB	36	2.36		
PAR#64#ACL	37	2.37		CP60/VNSP
PAR#64#ACL	38	2.38		CP60/VNSP
PAR#64#ACL	39	2.39		CP60/VNSP
PAR#64#ACL	40	2.40		CP60/VNSP
PAR#64#ACL	41	2.41		CP60/VNSP
PAR#64#ACL	42	2.42		CP60/VNSP
FL#1300	43	2.43		
FL#1300	44	2.44		
FL#1300	45	2.45		
FL#1300	46	2.46		
blinder	47	2.47		
blinder	48	2.48		

Name	Type	ID*fixture	Patch	Note
SPOT	Briteq+BTX-Saturn	301	1.1	25CH
SPOT	Briteq+BTX-Saturn	302	1.26	25CH
SPOT	Briteq+BTX-Saturn	303	1.51	25CH
SPOT	Briteq+BTX-Saturn	304	1.76	25CH
SPOT	Briteq+BTX-Saturn	305	1.101	25CH
SPOT	Briteq+BTX-Saturn	306	1.126	25CH
WASH+UP	Briteq+BT-Orbit	201	1.151	14CH
WASH+UP	Briteq+BT-Orbit	202	1.165	14CH
WASH+UP	Briteq+BT-Orbit	203	1.179	14CH
WASH+UP	Briteq+BT-Orbit	204	1.193	14CH
WASH+UP	Briteq+BT-Orbit	205	1.207	14CH
WASH+UP	Briteq+BT-Orbit	206	1.221	14CH
WASH+FLOR	Briteq+BT-Orbit	207	1.235	14CH
WASH+FLOR	Briteq+BT-Orbit	208	1.249	14CH
WASH+FLOR	Briteq+BT-Orbit	209	1.263	14CH
WASH+FLOR	Briteq+BT-Orbit	210	1.277	14CH
WASH+FLOR	Briteq+BT-Orbit	211	1.291	14CH
WASH+FLOR	Briteq+BT-Orbit	212	1.305	14CH
PAR+LED	STARWAY+Parkolor120	11	1.319	10CH
PAR+LED	STARWAY+Parkolor120	12	1.329	10CH
Strob	STARWAY+Stroblite+10K	3001	1.339	4CH
sunstrip	Dimmer	21	1.343	10CH
sunstrip	Dimmer	22	1.353	10CH
sunstrip	Dimmer	23	1.363	10CH
sunstrip	Dimmer	24	1.373	10CH
HAZER	DF50	501	1.501	1CH

PARKING ET COURANT ELEC TOURBUS SPLENDID / TOURBUS PARKING AND POWER SPLENDID



Prise 16A derrière la petite grille grise / 16A power plug available behind the small grey metal gate.